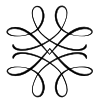


THE WATERCREST





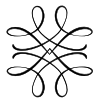
THE WATERCREST

The Watercrest is a complex of 2-storey villas and townhouses located in the Meydan area.



+971 (4) 581-4553





THE WATERCREST

+971 (4) 581-4553



Dynamic, contrasting architecture


Modern dynamic architecture looks impressive thanks to additional decorative elements on the facade. Contrasting colors highlight the elegance of the homes. For your convenience, parking spaces are provided in front of the entrance.






THE WATERCREST

+971 (4) 581-4553



wood-look material in graphite and milky gray colors



decorative relief panels

15 minutes drive to central areas and airport

Nearby, an 11-minute drive, is the Golf Megastore, where you can get acquainted with this aristocratic game or improve your skills. It is also worth noting good transport accessibility. Dubai city center and Dubai International Airport are just 15 minutes' drive away.

+971 (4) 581-4553



THE WATERCREST

COMMUNITY PARK

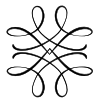


THE WATERCREST

+971 (4) 581-4553

Extensive area with a lot of community

Meydan is one of the largest districts, which consists of several micro-districts, small communities and business quarters. The complex includes apartments, villas, retail space, as well as numerous offices. According to the architects and designers, the exterior and interior of most of the buildings are made in oriental style. Offices and residential buildings are surrounded by many shops, pedestrian areas and paths, water canals, embankments and green alleys.



THE WATERCREST

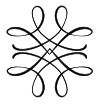
+971 (4) 581-4553



Villas and townhouses

The project includes The Riverine Villas with 4 and 5 bedrooms and The Alcove and The Arcadia townhouses with 3 bedrooms.





THE WATERCREST

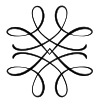
Finishing from natural materials without furniture

The interior is made in natural shades using marble, natural wood and stone. A fully equipped kitchen is ready for your culinary masterpieces, and a "smart home" system will be a pleasant bonus.



+971 (4) 581-4553





THE WATERCREST

+971 (4) 581-4553



Marble living room

The living room is made in light colors. White marble floors and staircases are combined with wood-effect floors on the first and second floors. Thanks to double light, the space is filled with coziness, and light walls visually expand it.

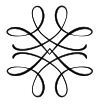


Living room arrangement option

+971 (4) 581-4553

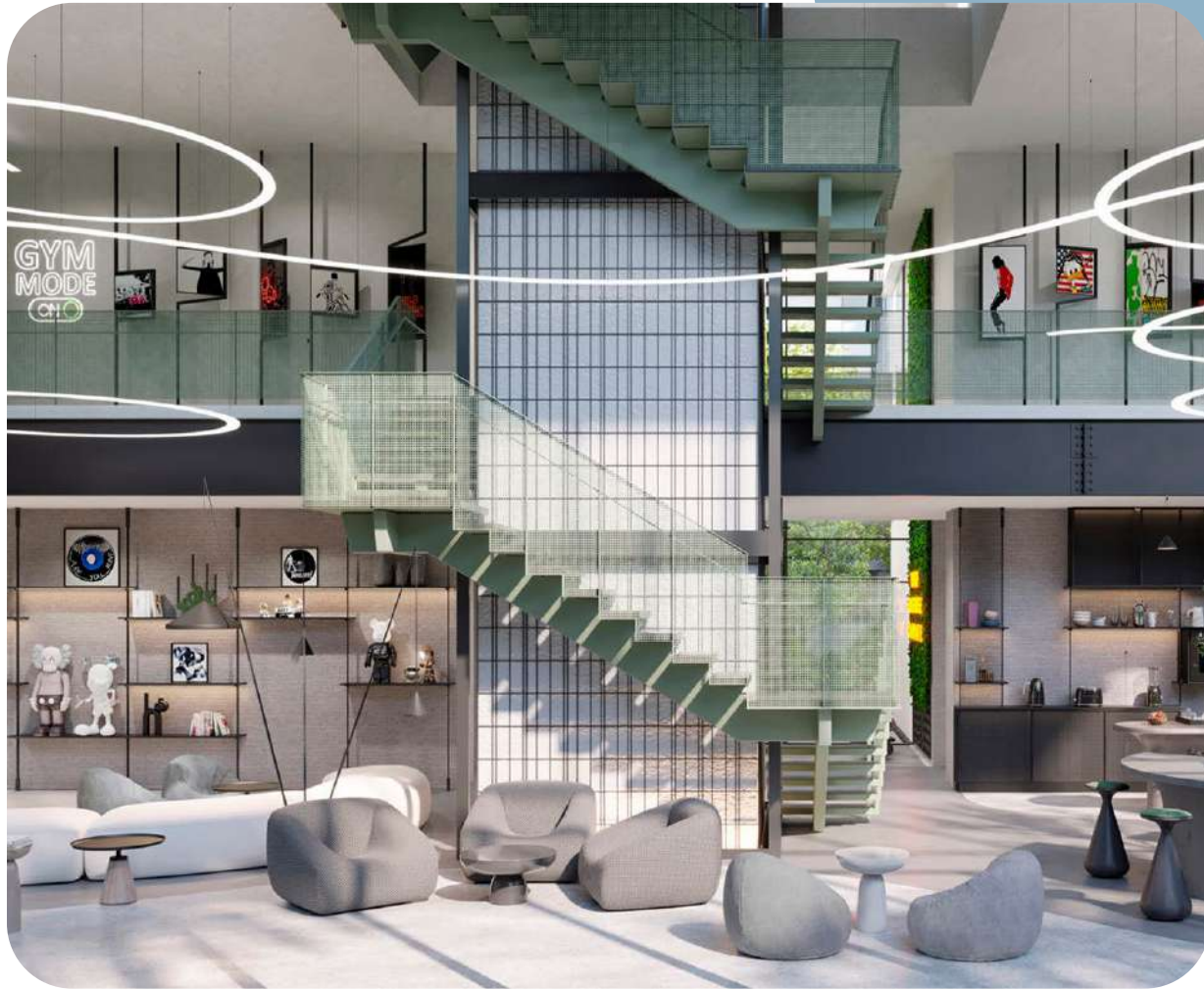


THE WATERCREST

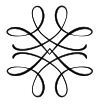


THE WATERCREST

Living room arrangement options



+971 (4) 581-4553



THE WATERCREST

+971 (4) 581-4553



Kitchen equipped with household appliances

The apartment's kitchen is equipped with Smeg appliances. The kitchen set is made of natural wood veneer and high-quality laminate, equipped with drawers and shelves. The countertop and island are made of marble.



Kitchen arrangement option

+971 (4) 581-4553



THE WATERCREST

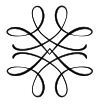
Ready-to-use bathroom

The apartment's bathroom is designed in a modern style. The floor and walls are finished with porcelain stoneware and natural stone. Cabinets and shelves are made to order. Plumbing fixtures from the Gessi brand or its equivalent are installed. The tabletop is made of stone, the partition is made of tinted glass.

+971 (4) 581-4553



THE WATERCREST

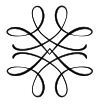


THE WATERCREST

Layouts of townhouses with 3 bedrooms



+971 (4) 581-4553



THE WATERCREST

4-bedroom villa layouts



+971 (4) 581-4553



THE WATERFRONT

Private yard

Each residence has a back garden with outdoor lounge area, swimming pool and parking space for 2 cars in the front yard.

9771 (4) 581-4553

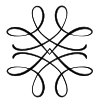


THE WATERCREST

River Club

The Watercrest territory has a central common area - the river club, where you can meet your neighbors and spend time with loved ones. There is a relaxation area with sun loungers, a long swimming pool with areas for children and adults in the shape of a river, fields for cozy picnics, a playground and a club for children, a dining area with barbecue and many lounge areas.

+971 (4) 581-4553

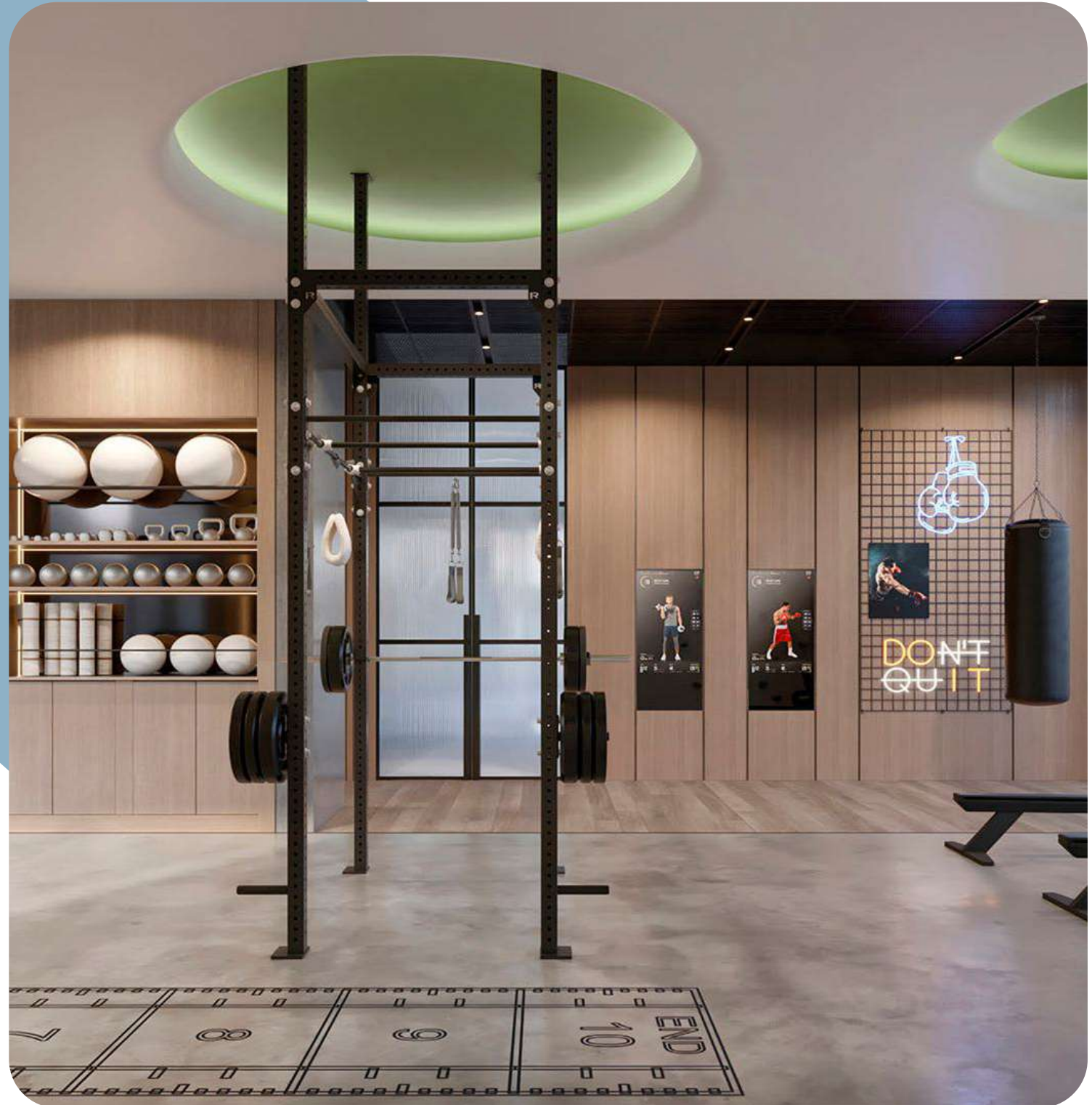


THE WATERCREST

Gym on the territory of the project



+971 (4) 581-4553



Yoga studio for residents

+971 (4) 581-4553

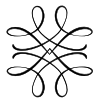


THE WATERCREST

Kids club

+971 (4) 581-4553





THE WATERCREST

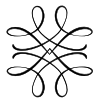
+971 (4) 581-4553



Meydan Racecourse

The Meydan Racecourse Grandstand accommodates up to 80,000 spectators and has a total track length of 1.5 kilometers. The racecourse's infrastructure also includes an equestrian museum, a gallery, a five-star hotel, a golf course and a multifunctional conference center.





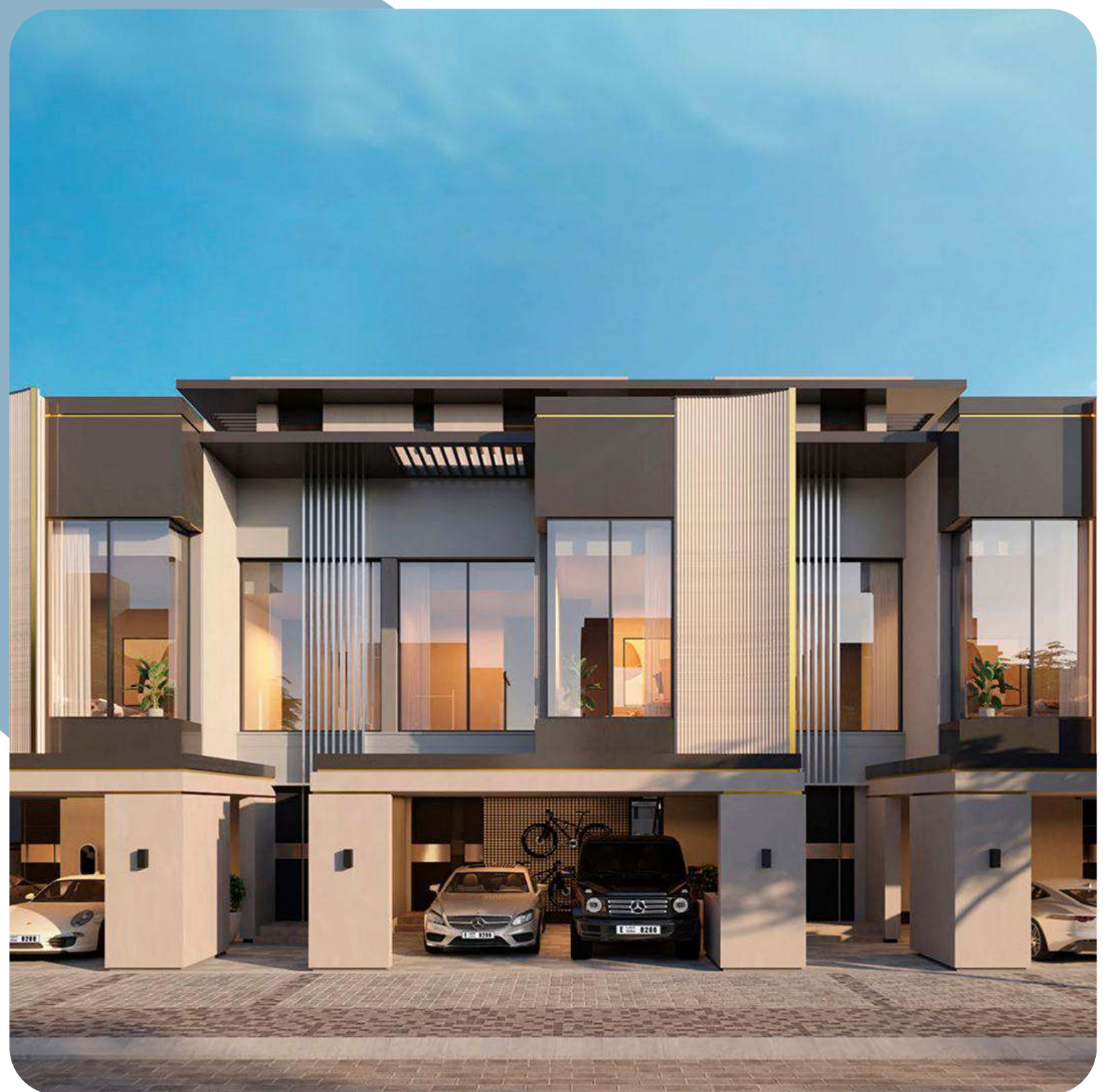
THE WATERCREST

Project developer – Ellington Properties

Ellington Properties is a leading Dubai-based design development company committed to creating properties and residential communities for quality living. The company's projects are located in Mohammed Bin Rashid City (MBR), Downtown Dubai, Palm Jumeirah and Jumeirah Village Circle (JVC).



+971 (4) 581-4553



The project will be ready in the 4th quarter of 2027

+971 (4) 581-4553



THE WATERCREST

Dubai
+971 (4) 581-4553



Abu Dhabi
+971 (4) 581-2364

WE HELP PEOPLE
TO BUY PROPERTY

We sell deluxe, premium and business class property
in more than 140 residential developments in Dubai.
We will be the first to congratulate you on buying a new home.
We work with love and with no commission.

